

OCEAN

BANNERS

FOR **MAXIMUM** VISABILITY

BANNERS



20
Banners



13
City centers



4
Cities



7
Roadside

The Art of Outdoor®



Banners

Want to take your visibility to the next level?

Ocean Outdoor Sweden is a market leader in large-format wraps, or Banners, offering unbeatable solutions in **Stockholm, Gothenburg, Malmö** and **Visby**.

With strategically placed sites, we guarantee that your message reaches pedestrians, cyclists, and motorists in the busiest and most visited areas.

Our Banners are not only impressive in size but are also carefully selected to maximize exposure for your specific target audience.



Fridhemsplan, Stockholm

Banners



We make it simple for you

Our all-inclusive service means we handle the entire process – from permits and production to installation, dismantling and lighting.

All you need to do is focus on your message, and we'll take care of the rest.

Banners - creative solutions



Scaffolding

When façades are under renovation or new buildings are being constructed, we can arrange semi-permanent installations on the scaffolding.

Contact us for more information.



Banner with LED

Illuminate your Banner with LED lighting.

Contact us for more information.



Product on Banner

Stand out and take it further with your Banner. Why not mount a large-scale version of your product?

The only limit is your imagination.

Contact us for more information.

LOCATIONS

Stockholm

The Art of Outdoor®



OCEAN



Stureplan 15 Stockholm

The Location

This site offers clear visibility and exposure to Stureplan Square. The surrounding area includes several flagship stores, financial companies, and nightclubs. Stureplan is a well-known meeting point in central Stockholm with a high flow of people.

Address

Stureplan 15, Stockholm [Link to map](#)

Format

Area: 75 m2
Size: 1000×750 cm
Reach: 450 000/week

Period

1-4 weeks

It is possible to scale down the campaign material as follows:

Scale	Percent	Minimum resolution
1:1	100%	23 ppi
1:10	10%	230 ppi

Delivery

Send material to oo-se.wetransfer.com
14 days before campaign start unless otherwise agreed.

Enquires

Contact: adops@oceanoutdoor.se

Info for delivery:

High resolution print-ready PDF - CMYK.
Keep all layers in the file.

The artwork should be without marks and bleeds.

For best results, save the file without a profile (no color conversion). If you need to add a profile use ISO Coated V2.

Vectorize all paths for text fonts.

Always include PMS reference for specific colors such as the color of the logo and background.

If you wish to send a color proof we need to have it **3** weeks before the delivery date.

Fridhemsplan Stockholm

The Location

Located at the busy intersection of Fleminggatan / Sankt Eriksgatan next to Västermalmsgallerian, with visibility towards Sankt Eriksplan and Sankt Eriksbron. The surrounding area includes both residential and commercial activity with high pedestrian flow.

Address

Fleminggatan 40, Stockholm [Link to map](#)

Format

Area: 60 m2
Size: 500×1200 cm
Reach: 200 000/week

Period

1-4 weeks

It is possible to scale down the campaign material as follows:

Scale	Percent	Minimum resolution
1:1	100%	23 ppi
1:10	10%	230 ppi

Delivery

Send material to oo-se.wetransfer.com
14 days before campaign start unless otherwise agreed.

Enquires

Contact: adops@oceanoutdoor.se

Info for delivery:

High resolution print-ready PDF - CMYK.
Keep all layers in the file.

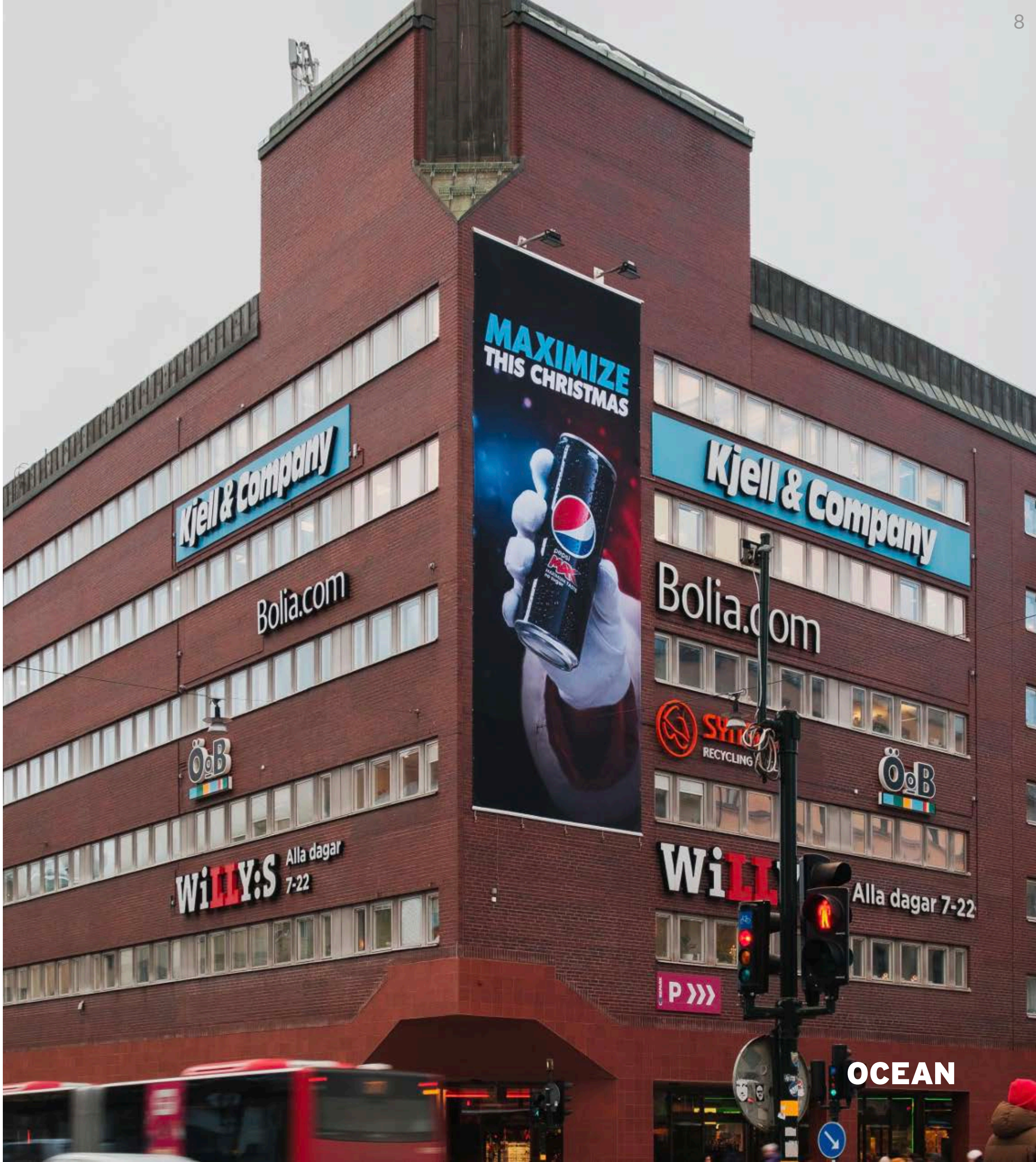
The artwork should be without marks and bleeds.

For best results, save the file without a profile (no color conversion). If you need to add a profile use ISO Coated V2.

Vectorize all paths for text fonts.

Always include PMS reference for specific colors such as the color of the logo and background.

If you wish to send a color proof we need to have it **3** weeks before the delivery date.





Hötorget Stockholm

The Location

Located right in the city centre, on the main street of Kungsgatan. Overlooking the large square and market that is famous Hötorget. Rightby a big movie theater, concert hall, Haymarket by Scandic, food court Kungshallarna, bus and subway station – this place is crowded from duskuntil dawn.

Address

Hötorget Kungsgatan 48, Stockholm [Link to map](#)

Format

Area: 125 m2
Sizet: 1000×1250 cm
Reach: 400 000/week

Period

1-2 weeks

It is possible to scale down the campaign material as follows:

Scale	Percent	Minimum resolution
1:1	100%	23 ppi
1:10	10%	230 ppi

Delivery

Send material to oo-se.wetransfer.com
14 days before campaign start unless otherwise agreed.

Enquires

Contact: adops@oceanoutdoor.se

Info for delivery:

High resolution print-ready PDF - CMYK.
Keep all layers in the file.

The artwork should be without marks and bleeds.

For best results, save the file without a profile (no color conversion). If you need to add a profile use ISO Coated V2.

Vectorize all paths for text fonts.

Always include PMS reference for specific colors such as the color of the logo and background.

If you wish to send a color proof we need to have it **3** weeks before the delivery date.

Odenplan Stockholm

The Location

Right at Odenplan, at the intersection of Odengatan / Norrtullsgatan. With 64 m², this site gives your brand exposure to approx. 200,000 passers-by each week.

Address

Odengatan 71, Stockholm [Link to map](#)

Format

Area: 64 m2
Size: 490×1300 cm
Reach: 200 000/week

Period

1-4 weeks

It is possible to scale down the campaign material as follows:

Scale	Percent	Minimum resolution
1:1	100%	23 ppi
1:10	10%	230 ppi

Delivery

Send material to oo-se.wetransfer.com
14 days before campaign start unless otherwise agreed.

Enquires

Contact: adops@oceanoutdoor.se

Info for delivery:

High resolution print-ready PDF - CMYK.
Keep all layers in the file.

The artwork should be without marks and bleeds.

For best results, save the file without a profile (no color conversion). If you need to add a profile use ISO Coated V2.

Vectorize all paths for text fonts.

Always include PMS reference for specific colors such as the color of the logo and background.

If you wish to send a color proof we need to have it **3** weeks before the delivery date.



Kungsgatan Stockholm

The Location

Kungsgatan connects the city center with Stureplan – Stockholm's hotspot for nightlife, exclusive restaurants and luxury shops. Always bustling with activity, this is the ideal site to stand out and reach a broad audience.

Address

Kungsgatan 24, Stockholm [Link to map](#)

Format

Area: 41 m²
Size: 600×680 cm
Reach: 300 000/week

Period

1-4 weeks

It is possible to scale down the campaign material as follows:

Scale	Percent	Minimum resolution
1:1	100%	23 ppi
1:10	10%	230 ppi

Delivery

Send material to oo-se.wetransfer.com
14 days before campaign start unless otherwise agreed.

Enquires

Contact: adops@oceanoutdoor.se

Info for delivery:

High resolution print-ready PDF - CMYK.
Keep all layers in the file.

The artwork should be without marks and bleeds.

For best results, save the file without a profile (no color conversion). If you need to add a profile use ISO Coated V2.

Vectorize all paths for text fonts.

Always include PMS reference for specific colors such as the color of the logo and background.

If you wish to send a color proof we need to have it **3** weeks before the delivery date.

Kungsträdgården Stockholm

The Location

In the heart of Kungsträdgården, central Stockholm, your brand can be displayed on a three-sided column of 75 m². This site can also be combined with events and pop-up solutions.

Address

Kungsträdgården, Stockholm [Link to map](#)

Format

Area: 75 m²
Size: 3×450×560 cm
3×500×50 cm (board)
Reach: 600 000/week

Period

1 week

It is possible to scale down the campaign material as follows:

Scale	Percent	Minimum resolution
1:1	100%	23 ppi
1:10	10%	230 ppi

Delivery

Send material to oo-se.wetransfer.com
14 days before campaign start unless otherwise agreed.

Enquires

Contact: adops@oceanoutdoor.se

Info for delivery:

High resolution print-ready PDF - CMYK.
Keep all layers in the file.

The artwork should be without marks and bleeds.

For best results, save the file without a profile (no color conversion). If you need to add a profile use ISO Coated V2.

Vectorize all paths for text fonts.

Always include PMS reference for specific colors such as the color of the logo and background.

If you wish to send a color proof we need to have it **3** weeks before the delivery date.



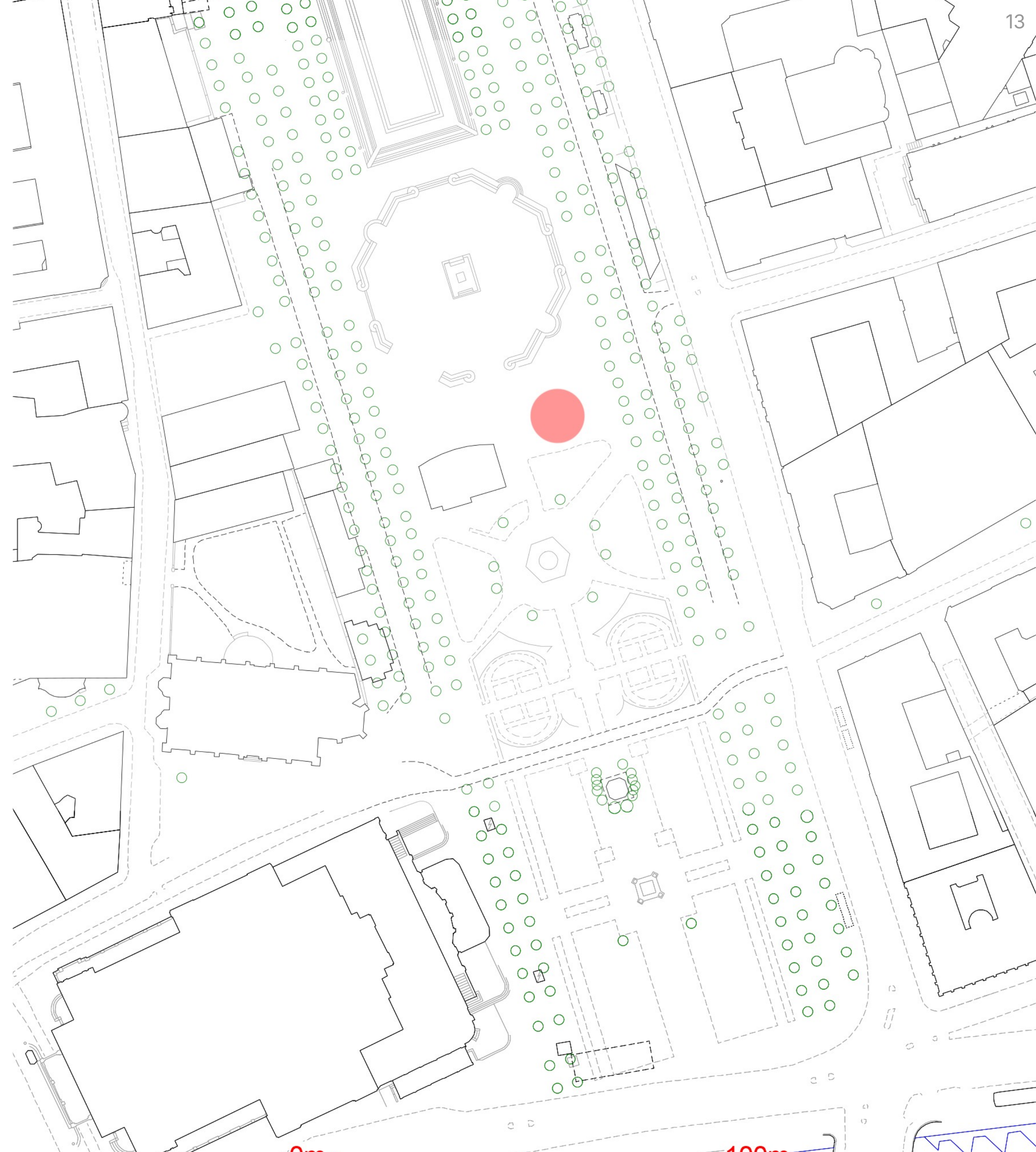
Kungsträdgården Stockholm

The Location

In the middle of Kungsträdgården in central Stockholm you have the opportunity to showcase your brand on a 75 m², 3 sided pillar. This location can be used in combination with brand experiences, such as events and pop up stores.

Address

Kungsträdgården, Stockholm [Link to map](#)





Essingeleden Stockholm

The Location

A high-traffic bypass road for motorists with approx. 1.4 million in weekly reach.
Reaching commuters as well as tourists on their way to Arlanda.

Address

Essinge brogata 22, Stockholm [Link to map](#)

Format

Area: 138 m2
Size: 1400×985 cm
Reach: 1 375 000/week

Period

2-4 weeks

It is possible to scale down the campaign material as follows:

Scale	Percent	Minimum resolution
1:1	100%	23 ppi
1:10	10%	230 ppi

Delivery

Send material to oo-se.wetransfer.com
14 days before campaign start unless otherwise agreed.

Enquires

Contact: adops@oceanoutdoor.se

Info for delivery:

High resolution print-ready PDF - CMYK.
Keep all layers in the file.

The artwork should be without marks and bleeds.

For best results, save the file without a profile (no color conversion). If you need to add a profile use ISO Coated V2.

Vectorize all paths for text fonts.

Always include PMS reference for specific colors such as the color of the logo and background.

If you wish to send a color proof we need to have it **3** weeks before the delivery date.

Roslagstull Stockholm

The Location

At the intersection of Cederdalsgatan / Roslagsgatan towards Lidingö. This 68 m² site has a reach of nearly 1.9 million per week, making it a perfect place for your brand to be seen.

Address

Birger Jarlsgatan 131, Stockholm [Link to map](#)

Format

Area: 68 m2
Size: 700×970 cm
Reach: 1 912 330/week

Period

2-4 weeks

It is possible to scale down the campaign material as follows:

Scale	Percent	Minimum resolution
1:1	100%	23 ppi
1:10	10%	230 ppi

Delivery

Send material to oo-se.wetransfer.com 14 days before campaign start unless otherwise agreed.

Enquires

Contact: adops@oceanoutdoor.se

Info for delivery:

High resolution print-ready PDF - CMYK.
Keep all layers in the file.

The artwork should be without marks and bleeds.

For best results, save the file without a profile (no color conversion). If you need to add a profile use ISO Coated V2.

Vectorize all paths for text fonts.

Always include PMS reference for specific colors such as the color of the logo and background.

If you wish to send a color proof we need to have it 3 weeks before the delivery date.





Värmdöleden Stockholm

The Location

Along Värmdöleden towards Nacka, Värmdö and Saltsjöbaden. With 147 m², no one will miss your brand. Weekly reach approx. 350,000.

Address

Vikdalsgränd 10B, Stockholm [Link to map](#)

Format

Area: 147 m²
Size: 1050×1400 cm
Reach: 344 500/week

Period

2-4 weeks

It is possible to scale down the campaign material as follows:

Scale	Percent	Minimum resolution
1:1	100%	23 ppi
1:10	10%	230 ppi

Delivery

Send material to oo-se.wetransfer.com **14** days before campaign start unless otherwise agreed.

Enquires

Contact: adops@oceanoutdoor.se

Info for delivery:

High resolution print-ready PDF - CMYK. Keep all layers in the file.

The artwork should be without marks and bleeds.

For best results, save the file without a profile (no color conversion). If you need to add a profile use ISO Coated V2.

Vectorize all paths for text fonts.

Always include PMS reference for specific colors such as the color of the logo and background.

If you wish to send a color proof we need to have it **3** weeks before the delivery date.

Norrtull Stockholm

The Location

Next to Norrtull, along Sveavägen towards Lidingö. This 162 m² site offers a reach of approx. 500,000/week.

Address

Sveavägen 167, Stockholm [Link to map](#)

Format

Area: 162 m2
Size: 1800×900 cm
Reach: 490 000/week

Period

2-4 weeks

It is possible to scale down the campaign material as follows:

Scale	Percent	Minimum resolution
1:1	100%	23 ppi
1:10	10%	230 ppi

Delivery

Send material to oo-se.wetransfer.com
14 days before campaign start unless otherwise agreed.

Enquires

Contact: adops@oceanoutdoor.se

Info for delivery:

High resolution print-ready PDF - CMYK.
Keep all layers in the file.

The artwork should be without marks and bleeds.

For best results, save the file without a profile (no color conversion). If you need to add a profile use ISO Coated V2.

Vectorize all paths for text fonts.

Always include PMS reference for specific colors such as the color of the logo and background.

If you wish to send a color proof we need to have it **3** weeks before the delivery date.



Drottningholmsvägen Stockholm

The Location

Drottningholmsvägen connects central Stockholm with Drottningholm Palace in Ekerö municipality. With high traffic around the clock, this site reaches commuters between Bromma/Alvik and the city. Located close to one of the area's busiest roundabouts.

Address

Drottningholmsvägen, Stockholm [Link to map](#)

Format

Area: 39 m2
Size: 450×850 cm
Reach: 576 500/week

Period

2-4 weeks

It is possible to scale down the campaign material as follows:

Scale	Percent	Minimum resolution
1:1	100%	23 ppi
1:10	10%	230 ppi

Delivery

Send material to oo-se.wetransfer.com
14 days before campaign start unless otherwise agreed.

Enquires

Contact: adops@oceanoutdoor.se

Info for delivery:

High resolution print-ready PDF - CMYK.
Keep all layers in the file.

The artwork should be without marks and bleeds.

For best results, save the file without a profile (no color conversion). If you need to add a profile use ISO Coated V2.

Vectorize all paths for text fonts.

Always include PMS reference for specific colors such as the color of the logo and background.

If you wish to send a color proof we need to have it **3** weeks before the delivery date.

LOCATIONS

Göteborg



Redbergplatsen Göteborg

The Location

With 144 m² near the E6 and Redbergsplatsen in central Gothenburg, this site reaches both pedestrians and motorists traveling to and from the city.

Address

Redbergsvägen 3, Göteborg [Link to map](#)

Format

Area: 144 m²
Size: 1205×1190 cm
Reach: 294 500/week

Period

2 weeks

It is possible to scale down the campaign material as follows:

Scale	Percent	Minimum resolution
1:1	100%	23 ppi
1:10	10%	230 ppi

Delivery

Send material to oo-se.wetransfer.com
14 days before campaign start unless otherwise agreed.

Enquires

Contact: adops@oceanoutdoor.se

Info for delivery:

High resolution print-ready PDF - CMYK.
Keep all layers in the file.

The artwork should be without marks and bleeds.

For best results, save the file without a profile (no color conversion). If you need to add a profile use ISO Coated V2.

Vectorize all paths for text fonts.

Always include PMS reference for specific colors such as the color of the logo and background.

If you wish to send a color proof we need to have it **3** weeks before the delivery date.



Oscarsleden Göteborg

The Location

ne of Gothenburg’s busiest bypass roads, with a reach of over 360,000/week. This 105 m² site reaches both commuters and passers-by.

Address

Andréegatan 14, Göteborg [Link to map](#)

Format

Area: 105 m2
Size: 1500×700 cm
Reach: 364 000/week

Period

2 weeks

It is possible to scale down the campaign material as follows:

Scale	Percent	Minimum resolution
1:1	100%	23 ppi
1:10	10%	230 ppi

Delivery

Send material to oo-se.wetransfer.com
14 days before campaign start unless otherwise agreed.

Enquires

Contact: adops@oceanoutdoor.se

Info for delivery:

High resolution print-ready PDF - CMYK.
Keep all layers in the file.

The artwork should be without marks and bleeds.

For best results, save the file without a profile (no color conversion). If you need to add a profile use ISO Coated V2.

Vectorize all paths for text fonts.

Always include PMS reference for specific colors such as the color of the logo and background.

If you wish to send a color proof we need to have it **3** weeks before the delivery date.





Kungsportsplatsen Göteborg

The Location

Optimal location right at Kungsportsplatsen, opposite the bus and tram terminal. Visible from Östra Hamngatan, Kungstorget, and Kungsportsbron. Located in the heart of Gothenburg City, with foot traffic from Nordstan, NK, and within the Vallgraven area — surrounded by nightlife, business professionals, and tourists.

Address

Östra Hamngatan 42, Göteborg [Link to map](#)

Format

Area: 50 m2
Size: 500×1000 cm
Reach: 210 000/week

Period

2 weeks

It is possible to scale down the campaign material as follows:

Scale	Percent	Minimum resolution
1:1	100%	23 ppi
1:10	10%	230 ppi

Delivery

Send material to oo-se.wetransfer.com
14 days before campaign start unless otherwise agreed.

Enquires

Contact: adops@oceanoutdoor.se

Info for delivery:

High resolution print-ready PDF - CMYK.
Keep all layers in the file.

The artwork should be without marks and bleeds.

For best results, save the file without a profile (no color conversion). If you need to add a profile use ISO Coated V2.

Vectorize all paths for text fonts.

Always include PMS reference for specific colors such as the color of the logo and background.

If you wish to send a color proof we need to have it **3** weeks before the delivery date.

LOCATIONS

Malmö

The Art of Outdoor®



OCEAN

Centralstationen A Malmö

The Location

Near Malmö Central Station, next to site B. They can be booked separately or as a combo. A highly frequented area by both tourists and locals.

Address

Norra Vallgatan 50, Malmö [Link to map](#)

Format

Area: 45 m2
Size: 450×1000 cm
Reach: 125 000/week

Period

2 weeks

It is possible to scale down the campaign material as follows:

Scale	Percent	Minimum resolution
1:1	100%	23 ppi
1:10	10%	230 ppi

Delivery

Send material to oo-se.wetransfer.com
14 days before campaign start unless otherwise agreed.

Enquires

Contact: adops@oceanoutdoor.se

Info for delivery:

High resolution print-ready PDF - CMYK.
Keep all layers in the file.

The artwork should be without marks and bleeds.

For best results, save the file without a profile (no color conversion). If you need to add a profile use ISO Coated V2.

Vectorize all paths for text fonts.

Always include PMS reference for specific colors such as the color of the logo and background.

If you wish to send a color proof we need to have it **3** weeks before the delivery date.

Centralstationen B Malmö

The Location

Next to Malmö Central Station, side by side with site A. Can be booked separately or as a combo. Popular with tourists and locals moving to and from the city.

Address

Norra Vallgatan 50, Malmö [Link to map](#)

Format

Area: 150 m2
Size: 2000×750 cm
Reach: 125 000/week

Period

2 weeks

It is possible to scale down the campaign material as follows:

Scale	Percent	Minimum resolution
1:1	100%	23 ppi
1:10	10%	230 ppi

Delivery

Send material to oo-se.wetransfer.com
14 days before campaign start unless otherwise agreed.

Enquires

Contact: adops@oceanoutdoor.se

Info for delivery:

High resolution print-ready PDF - CMYK.
Keep all layers in the file.

The artwork should be without marks and bleeds.

For best results, save the file without a profile (no color conversion). If you need to add a profile use ISO Coated V2.

Vectorize all paths for text fonts.

Always include PMS reference for specific colors such as the color of the logo and background.

If you wish to send a color proof we need to have it **3** weeks before the delivery date.





Centralstationen A+B Malmö

The Location

Side by side next to Malmö Central Station. Can be booked separately or together. A well-frequented area with tourists and locals.

Address

Norra Vallgatan 50, Malmö [Link to map](#)

Format

Area: 45 + 150 m²
Size: 450×1000 + 2000×750 cm
Reach: 125 000/week

Period

2 weeks

It is possible to scale down the campaign material as follows:

Scale	Percent	Minimum resolution
1:1	100%	23 ppi
1:10	10%	230 ppi

Delivery

Send material to oo-se.wetransfer.com
14 days before campaign start unless otherwise agreed.

Enquires

Contact: adops@oceanoutdoor.se

Info for delivery:

High resolution print-ready PDF - CMYK.
Keep all layers in the file.

The artwork should be without marks and bleeds.

For best results, save the file without a profile (no color conversion). If you need to add a profile use ISO Coated V2.

Vectorize all paths for text fonts.

Always include PMS reference for specific colors such as the color of the logo and background.

If you wish to send a color proof we need to have it **3** weeks before the delivery date.

Gustav Adolfs Torg A+B

Malmö

The Location

A very central site near Gustav Adolfs Torg and Södra Tullgatan. Visible to all passers-by from both the square and the nearby shopping center Triangeln. With its central location near shopping, nightlife, cafés and restaurants, this is a highly attractive place to be seen.

Address

Södra Tullgatan 4, Malmö [Link to map](#)

Format

Area: 70 m2
Size: 400×700 cm + 350×1000 cm
Reach: 175 000/week

Period

2 weeks

It is possible to scale down the campaign material as follows:

Scale	Percent	Minimum resolution
1:1	100%	23 ppi
1:10	10%	230 ppi

Delivery

Send material to **oo-se.wetransfer.com**
14 days before campaign start unless otherwise agreed.

Enquires

Contact: **adops@oceanoutdoor.se**

Info for delivery:

High resolution print-ready PDF - CMYK.
Keep all layers in the file.

The artwork should be without marks and bleeds.

For best results, save the file without a profile (no color conversion). If you need to add a profile use ISO Coated V2.

Vectorize all paths for text fonts.

Always include PMS reference for specific colors such as the color of the logo and background.

If you wish to send a color proof we need to have it **3** weeks before the delivery date.





Södergatan Malmö

The Location
Right in the middle of busy Södergatan. With 40 m², this site can't be missed. Close to shopping, cafés and restaurants, it's a popular spot for both tourists and locals.

Address
Södergatan 26, Malmö [Link to map](#)

Format
Area: 40,6 m2
Size: 410×990 cm
Reach: 200 000/week

Period
2 weeks

It is possible to scale down the campaign material as follows:

Scale	Percent	Minimum resolution
1:1	100%	23 ppi
1:10	10%	230 ppi

Delivery
Send material to oo-se.wetransfer.com
14 days before campaign start unless otherwise agreed.

Enquires
Contact: adops@oceanoutdoor.se

Info for delivery:

High resolution print-ready PDF - CMYK.
Keep all layers in the file.

The artwork should be without marks and bleeds.

For best results, save the file without a profile (no color conversion). If you need to add a profile use ISO Coated V2.

Vectorize all paths for text fonts.

Always include PMS reference for specific colors such as the color of the logo and background.

If you wish to send a color proof we need to have it **3** weeks before the delivery date.

LOCATIONS

Visby



Hamnplan 5 Visby

The Location

Hamnplan 5 is located at one of the most central locations in Visby, in the harbour. With its central location inside the city walls, this is the perfect place to showcase your brand for all of Visby and its many visitors. Especially during Almedalsveckan, Swedens annual political week, when Visby becomes extra busy.

Address

Hamnplan 5, Visby [Link to map](#)

Format

Area: 40 m²
Size: 800×480 cm
Reach: 50 000/week

Period

2 weeks

It is possible to scale down the campaign material as follows:

Scale	Percent	Minimum resolution
1:1	100%	23 ppi
1:10	10%	230 ppi

Delivery

Send material to oo-se.wetransfer.com
14 days before campaign start unless otherwise agreed.

Enquires

Contact: adops@oceanoutdoor.se

Info for delivery:

High resolution print-ready PDF - CMYK.
Keep all layers in the file.

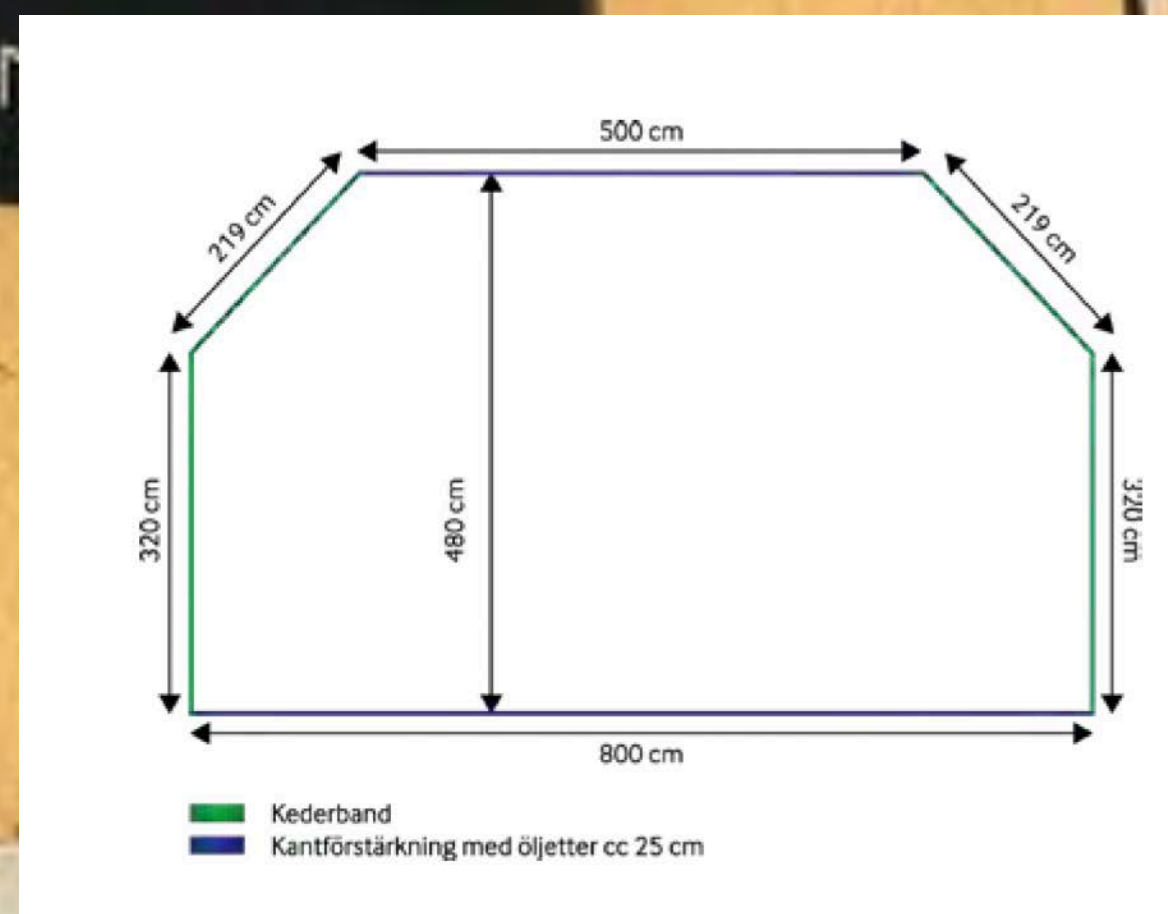
The artwork should be without marks and bleeds.

For best results, save the file without a profile (no color conversion). If you need to add a profile use ISO Coated V2.

Vectorize all paths for text fonts.

Always include PMS reference for specific colors such as the color of the logo and background.

If you wish to send a color proof we need to have it **3** weeks before the delivery date.



Banners - Locations

City	Location	Envrionment	Surfaces	Size	Format
Stockholm	Stureplan 15	City	1	1000×750 cm	High res. print-ready PDF - CMYK
Stockholm	Fridhemsplan	City	1	500×1200 cm	High res. print-ready PDF - CMYK
Stockholm	Hötorget	City	1	1000×700 cm	High res. print-ready PDF - CMYK
Stockholm	Odenplan	City	1	490×1300 cm	High res. print-ready PDF - CMYK
Stockholm	Kungsgatan	City	1	600×680 cm	High res. print-ready PDF - CMYK
Stockholm	Kungsträdgården	City	1	3×450×560 cm	High res. print-ready PDF - CMYK
Stockholm	Essingeleden	Roadside	1	1400×985 cm	High res. print-ready PDF - CMYK
Stockholm	Roslagstull	Roadside	1	700×970 cm	High res. print-ready PDF - CMYK
Stockholm	Värmdöleden	Roadside	1	1050×1400 cm	High res. print-ready PDF - CMYK
Stockholm	Norrtull	Roadside	1	1800×900 cm	High res. print-ready PDF - CMYK
Stockholm	Drottningholmsvägen	Roadside	1	450×850 cm	High res. print-ready PDF - CMYK
Göteborg	Oscarsleden	Roadside	1	1500×700 cm	High res. print-ready PDF - CMYK
Göteborg	Redbergsplatsen	Roadside	1	1205×1190 cm	High res. print-ready PDF - CMYK
Göteborg	Kungsportsplatsen	City	1	50×1000 cm	High res. print-ready PDF - CMYK
Malmö	Centralstationen A+B	City	2	450×1000 + 2000×750 cm	High res. print-ready PDF - CMYK
Malmö	Centralstationen A	City	1	450×1000 cm	High res. print-ready PDF - CMYK
Malmö	Centralstationen B	City	1	2000×750 cm	High res. print-ready PDF - CMYK
Malmö	Gustav Adolfs Torg A+B	City	2	400×700 + 350×1000 cm	High res. print-ready PDF - CMYK
Malmö	Södergatan	City	1	410×990 cm	High res. print-ready PDF - CMYK
Visby	Hamplan 5	City	1	800×480 cm	High res. print-ready PDF - CMYK